

World Travel Catering[®]
& Onboard Services

EXPO | 14 - 16 APR 2026
HAMBURG, GERMANY

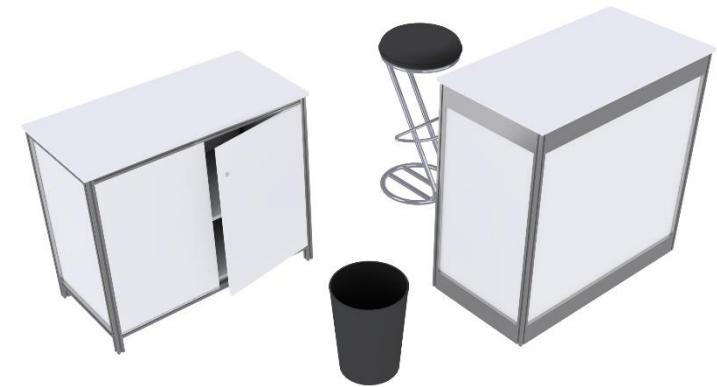
Furniture Package Information

If you wish to order a furniture package for your Shell Scheme stand, please contact the [WTCE Sales Team](#).

Please note that furniture packages cannot be ordered by Space Only stands.

Starter Furniture Package

- 1 x information counter – white, 100cm wide x 50cm deep x 100cm high, lockable
- 1 x bar stool – black seat
- 1 x sideboard – white, 80cm wide x 50cm deep x 100cm high
- 1 x waste paper basket



Please note that changes to furniture style and colour cannot be made, items can only be removed if not required.

If you wish to order additional furniture to match your furniture package, please contact HMC Customer Services directly.

The deadline for HMC orders is 17th March 2026. After this deadline prices will increase by 20%. Please note that all HMC service orders are subject to availability regardless of this deadline.

Furniture Package A & A1

Package A

- 1 x square table – white, 70cm wide x 70cm deep x 73cm high, chrome legs
- 2 x chairs – upholstered dark grey seats, chrome frame
- 1 x information counter – white, 100cm wide x 50cm deep x 100cm high, lockable
- 1 x bar stool – black seat
- 1 x waste paper basket



Package A1

- All of the above, plus; 1m x 1m shell storage area



Please note that changes to furniture style and colour cannot be made, items can only be removed if not required.

If you wish to order additional furniture to match your furniture package, please contact HMC Customer Services directly.

The deadline for HMC orders is 17th March 2026. After this deadline prices will increase by 20%. Please note that all HMC service orders are subject to availability regardless of this deadline.

Furniture Package B & B1

Package B

- 1 x bar table – white, 120cm wide x 60cm deep x 110cm high
- 2 x bar stools – white with backrest and chrome frame
- 1 x information counter – white, 100cm wide x 50cm deep x 100cm high, lockable
- 1 x bar stool – black seat
- 1 x waste paper basket

Package B1

- All of the above, plus; 1m x 1m storage area

Please note that changes to furniture style and colour cannot be made, items can only be removed if not required.

If you wish to order additional furniture to match your furniture package, please contact HMC Customer Services directly.

The deadline for HMC orders is 17th March 2026. After this deadline prices will increase by 20%. Please note that all HMC service orders are subject to availability regardless of this deadline.

